

CSG

Compact/Sound Proof Granulators



ZERMA



Compact/Sound Proof Granulators : GSC

The GSC compact/sound proof granulator series are designed with a fully enclosed sound proof box enclosure resulting in a extremely quiet operation. The sound proof enclosure ensures easy and quick access to the cutting chamber during rotor/stator knife servicing and screen removal. The sound proof material used is based on the latest technological research.

The completely welded cutting chamber in conjunction with the "V" type rotor design ensures dependability in operation and universal applications use. The cutting geometry of the GSC series allows material feed injection even with voluminous types of material.

The complete GSC series line achieves a high quality granulate independent of the material type such as injection moulded parts, bolw moulded parts, profiles, sheet, film, etc.



GSC Type 300/300 with integrated blower system



GSC Type 500/700



Compact sound proof design

The design of the GSC granulators in terms of material and construction, offers the best sound dampening characteristics combined with quick and easy access to the inner machine parts for servicing and maintenance work. The granulator is built as a compact unit that can be moved or transported by a fork lift or standard lifting device easily.



Economical Granulators: GSE

The Machines of the GSE range are based on the GSC models, and inherit all of their technologies and advantages.

The GSE machines do without the soundproofed housing to offer a more economical and compact machine without sacrificing usability and versatility.

The GSC and GSE series machines are economically priced, reliable, easy to clean and ensures a dependable operating unit.

ZERMA offers a wide range of accessories to enhance the GSC and GSE series such as material trans-port systems, conveyor belts, metal separators, fine separators.

Material Drawer:

The GSE machines are equipped with a stainless-steel material drawer to collect the ground infeed materials.

Optionally, the GSE series can be equipped with a suction trough and blowing station.





Simplified Knife Adjustment:

Knife adjustment is performed totally outside the granulator prior to installation with the assistance of a knife adjustment fixture that is provided with the machine. The rotor and stator knives are manufactured from a high tensile strength steel and can be resharpened numerous times.



Unique Cutting Geometry:

The rotor knives are designed with the latest "V" cut technology. In comparison to the standard full angled knives, the "V" cut design creates a consistent material cutting concentration toward the middle area of the rotor for the ultimate size reduction. The "V" cutting configuration reduces knife wear and eliminates excessive cutting chamber side wall wear.

Ultimate Material Infeed:

The GSC series' cutting chamber and rotor are engineered to deliver consistent material pull-in to deliver a high quality regrind from any infeed material and avoid bridging of voluminous and bulky parts on the rotor.



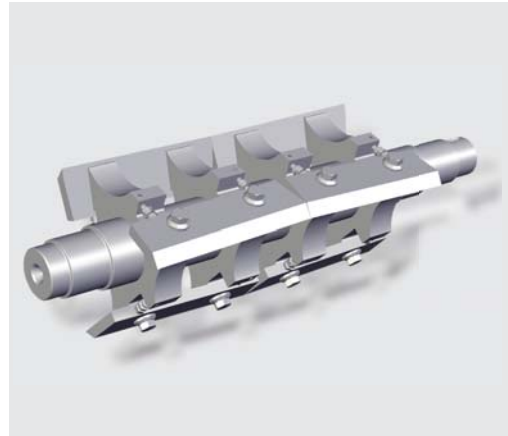
Different Applications require different machine setups, the GSC range of machines can be tailored to a wide variety of applications.

3 Blade Rotor:

The GSC and GSE machines come equipped with a 3 knife top blade rotor.

The standard rotor gives you a lot of flexibility. It can be used for big voluminous parts as well as smaller parts, for inline or central applications.

For more specialized applications there are different optional rotors to choose from.



5 Blade Rotor:

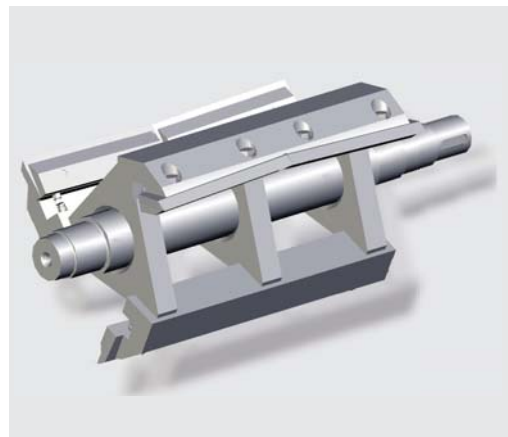
In addition to our standard 3 blade open rotor the GSC 500 and 700 series machines are available with a more closed 5 blade rotor, which yields in more cuts per revolution and helps reducing the time the material stays in the cutting chamber.

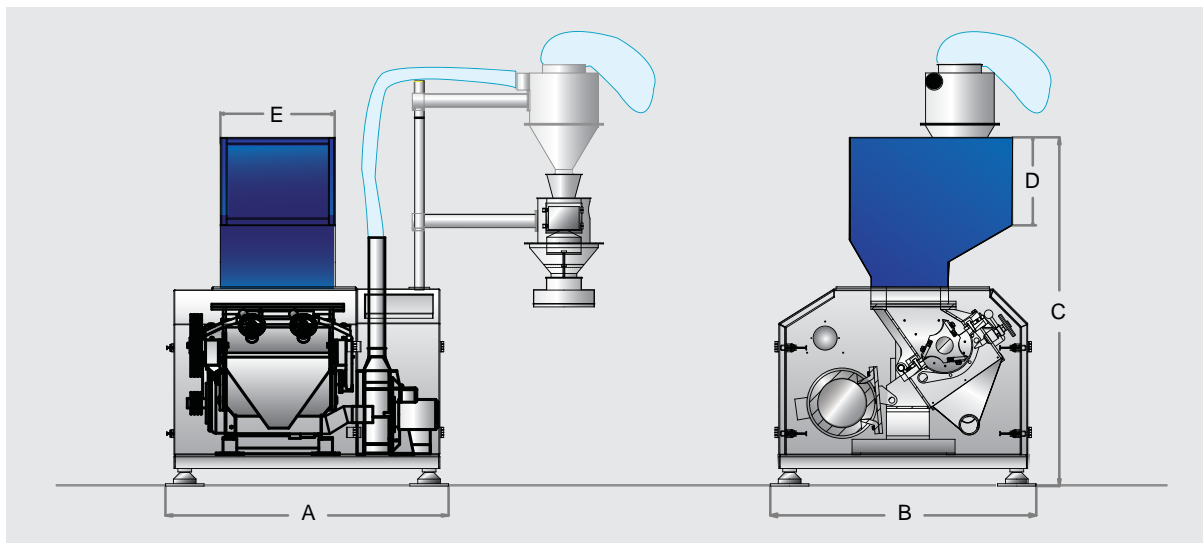


S-type Rotor:

Apart from the 3 and 5 knife top blade rotor we also offer our proven S-3 and S-5 type rotors from our GS and GSH range as an option for the GSC and GSE range of machines.

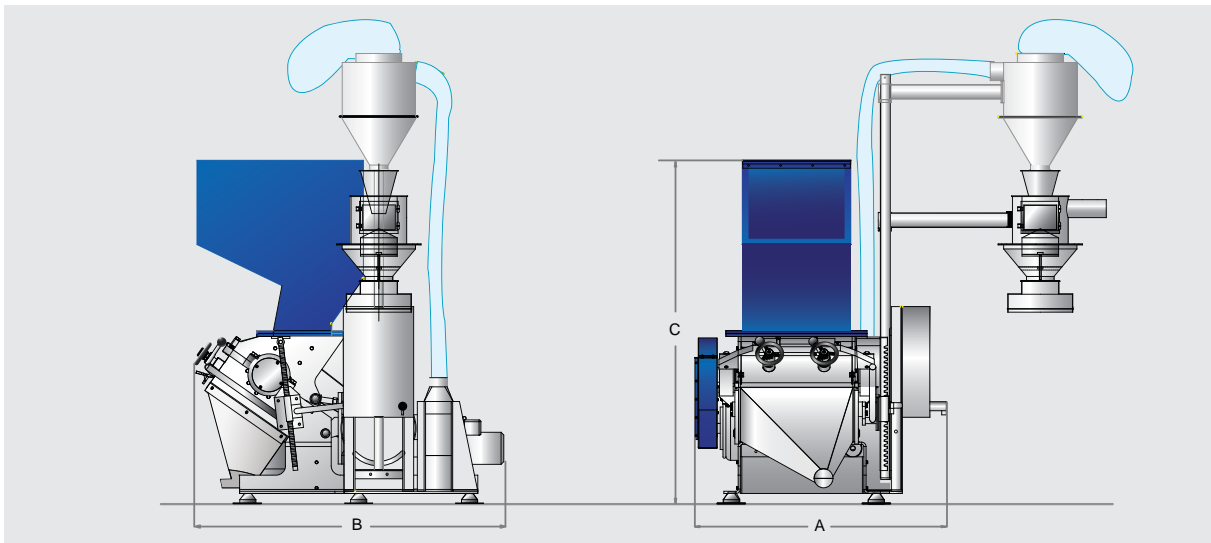
The S rotor protects the rotor blades better from shock and making the rotor less aggressive.





Type GSC	Rotor diameter (mm)	Rotor width (mm)	Cutting chamber cross section (mm)	Drive capacity (kW)	Width (A) (mm)	Length (B) (mm)	Height (C) (mm)
300 / 300*	300	300	315 x 300	7.5 - 11	1360	1550	2050
300 / 600*	300	590	315 x 590	11 - 18.5	1650	1550	2050
300 / 1000	300	990	315 x 990	18.5 - 22	1900	1550	2050
500 / 500*	500	500	515 x 500	22 - 37	1300	1900	2450
500 / 700	500	700	515 x 700	30 - 45	1500	1900	2450
500 / 1000	500	990	515 x 990	37 - 55	1800	1900	2450
700 / 700	700	700	715 x 700	45 - 55	1500	2200	2950
700 / 1000	700	990	715 x 990	45 - 75	1800	2200	2950

*Machines are available with integrated blower



Type GSE	Rotor diameter (mm)	Rotor width (mm)	Cutting chamber cross section (mm)	Drive capacity (kW)	Width (A) (mm)	Length (B) (mm)	Height (C) (mm)
300 / 300	300	300	315 x 300	7.5 - 11	1100	1660	1900
300 / 600	300	590	315 x 590	11 - 18.5	1380	1700	1900
300 / 1000	300	990	315 x 990	18.5 - 22	1620	1300	1900
500 / 500	500	500	515 x 500	22 - 37	1210	1610	2400
500 / 700	500	700	515 x 700	30 - 45	1410	1610	2400
500 / 1000	500	990	515 x 990	37 - 55	1710	2000	2400
700 / 700	700	700	715 x 700	45 - 55	1300	2270	2750
700 / 1000	700	990	715 x 990	45 - 75	1600	2270	2750

subject to technical modification



With more than 60 years of experience, ZERMA is one of the leading manufacturers of high quality granulators. From the small slow speed granulators to the large high performance granulators and including special machines such as the front entry granulators for pipes and profiles, or the pulveriser system for fine grinding applications. With drive powers ranging from 2,2 kw to 200 kw, the ZERMA range of machines covers the whole spectrum of plastics size reduction applications. Just call us for more detailed information or visit our website from where you can download any required brochures in your own language.

www.zerma.com

Please contact your nearest sales office

China:

Zerma Machinery & Recycling Technology (Shanghai) Co., Ltd.
5 Xinjie Rd XinQiao Township Ind. Park, Songjiang Shanghai, Zip: 201612, China
Phone: +86 21 57645573
Fax: +86 21 57646766
info@zerma.com · www.zerma.com

South-East-Asia:

ZERMA (Thailand) Co., Ltd.
78/6 Moo 7 Kingkaew Road, Rachatewa, Bangplee, Samutprakarn 10540 Thailand
Phone: +66 2 738 5056-7
Fax: +66 2 738 5058
info@zerma.co.th · www.zerma.co.th

Germany / Europe:

ZERMA Zerkleinerungsmaschinenbau GmbH
Im Rohrbusch 15
74939 Zuzenhausen
Germany
Phone: +49 (0)6226-7890-0
Fax: +49 (0)6226-7890-222
info@zerma.de · www.zerma.de

GB / Ireland:

ZERMA UK Ltd. (Richard Monkhouse)
27 Weaver Park Est
Mill Lane, Frodsham, Cheshire WA6 7JH
England
Phone: +44 1928 734724
Fax: +44 1928 734725
info@zerma.co.uk · www.zerma.co.uk

USA:

Econo-Grind USA
3000 Turner Street
South Attleboro, MA 02703 - 7900
USA
Phone: +1 508 399-3018
Fax: +1 508 399-3150
info@econogrind.com · www.econogrind.com

Your dealer: